



KRONOS

Quality since 1914

PRODUCT CATALOGUE



CONTENTS

FOREST CRANES

• Kronos 4000 4000 L	4
• Gripto 607 707	6
• Gripto 608 609 708 709	8
• Gripto 1009 1010	10
• Kronos 640 Pole Lift	12

FOREST TRAILERS

• Kronos 100	14
• Kronos 120	16
• Kargo 121	18
• Kronos 140	22
• Kronos 150	24
• Kronos 160	26

CONTROL SYSTEMS

• xCrane xCrane Pro LtCrane	28
• Smart Drive Smart Drive+	29
• Smart Stabilizer Control (SSC)	30

ADDITIONAL EQUIPMENT

• Kronos High-rise Sides	32
• Other equipment	34

CHAIN MULCHERS

• Predator 1700 M	38
• Predator 1700 H	40

HARROWS

• Kronos 3150 4150 H 4200 4900 H	42
--	----

KRONOS

Quality since 1914

KRONOS MACHINERY OY AB

Wikarsvägen 12, 68500 Kronoby, FINLAND

mail@kronos.fi | www.kronos.fi





KRONOS 4000 | 4000 L

» FOREST CRANE

The **KRONOS 4000** is an affordable crane series for general use. It can be used in agriculture and forestry but is also suitable for contractors. The crane is available with two different boom lengths, the basic model 4000 and the 4000 L model

» FEATURES

- Swing damper for grapple.
- Wide angle joint.
- Lift cylinder protection.
- Optional extra turning power with four cylinders.

KRONOS

4000

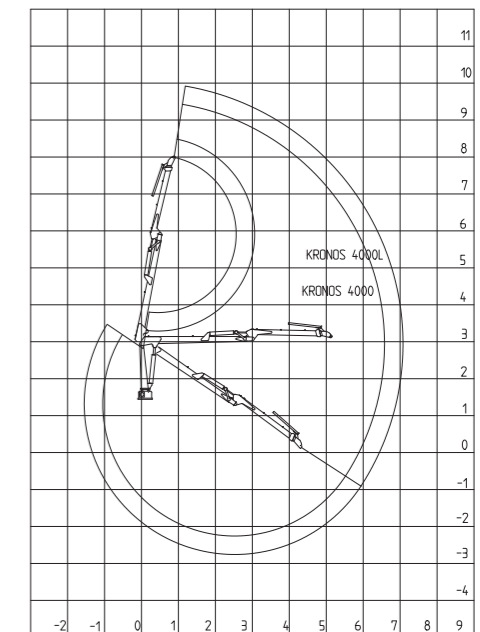
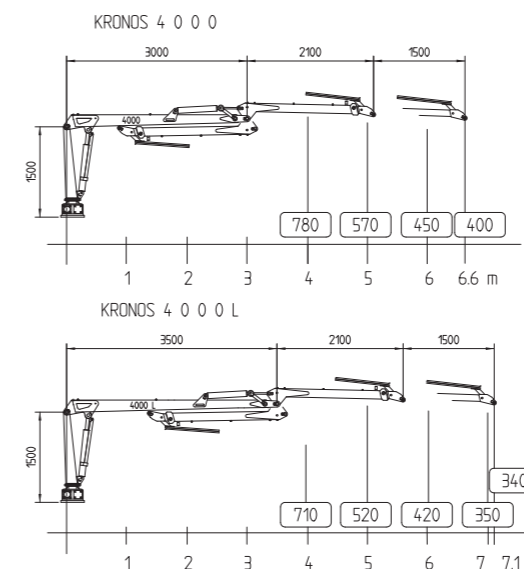
4000 L

Attaching	flange	flange
Max outreach	6,6 m	7,1 m
Length of main boom	3 m	3,5 m
Length of extension boom	1,5 m	1,5 m
Height	1,7 m	1,7 m
Width	1,48 m	1,48 m
Lifting moment, brutto/netto (4 m)	39,3/31 kNm	39,3/28 kNm
Allowable load (without grapple and rotator)	760 kg/4m	710 kg/4m
Turning angle of boom	390 degrees	390 degrees
Turning moment, brutto	7,9/15,3 kNm	7,9/15,3 kNm
Lubrication of turning device	oil	oil
Cylinders in turning device	2/4	2/4
Weight, basic loader	660 kg	670 kg
Working pressure	175 bar	175 bar
Recommended pump output	40–80 l/min	40–80 l/min

Recommended rotator: FHR 4.500RF

Recommenderad grapple: HSP 017

Size	0,17 m²
Claw width	345 mm
Length – closed	740 mm
Height – closed	470 mm
Height – open	730 mm
Max opening	1040 mm
Minimum log diameter	90 mm
Max width	370 mm
Weight	95 kg





GRIPTO

607 / 607 LP

707

Attaching	flange	flange
Max outreach	7,4 m	7,4 m
Length of main boom	3,35 m	3,35 m
Length of extension boom	1,9 m	1,9 m
Height	1,9 m	1,9 m
Width	1,25 m	1,25 m
Lifting moment, brutto/netto (4 m)	62/38 kNm	75/49 kNm
Allowable load (without grapple and rotator)	960 kg/4m	1240 kg/4m
Turning angle of boom	380 degrees	380 degrees
Turning moment, brutto	20 kNm	20 kNm
Lubrication of turning device	oil	oil
Cylinders in turning device	4	4
Weight, basic loader	1120 kg	1140 kg
Working pressure (low pressure)	210 (185) bar	210 bar
Recommended pump output	80-120 l/min	80-120 l/min

Recommended rotator: Indexator GV6

Recommended grapple: HSP 0,20

Size	0,20 m ²
Claw width	345 mm
Length – closed	740 mm
Height – closed	470 mm
Height – open	730 mm
Max opening	1040 mm
Minimum log diameter	90 mm
Max width	370 mm
Weight	95 kg

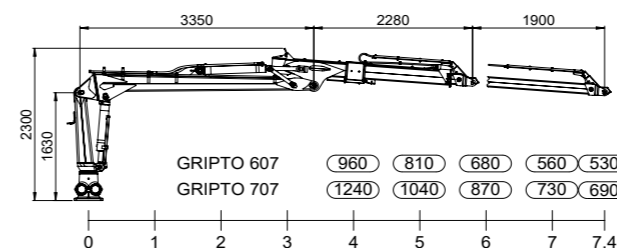
Gripto 607 | 707

» FOREST CRANE

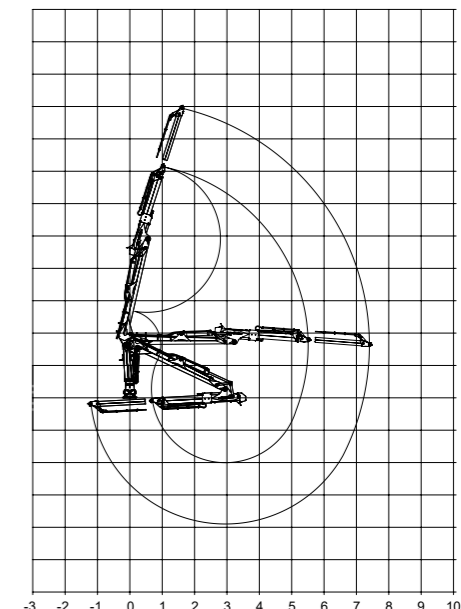
The Kronos **GRIPTO 607** and **707** cranes have an uncomplicated construction with single extension boom. Yet still, they have a long reach. Gripto offers well protected hoses all the way to the rotator.

» FEATURES

- A geometry that is perfectly suitable for trailer mounting. Possibility for parking position on load area as well as smooth loading near the trailer.
- Protected hoses out to the rotator.
- Simple single extension construction, yet with a long reach of 7,4 meters.
- Smart Boom Control, optional (700-series).
- Lift and slewing dampers (700-series).



GRIPTO 607 / 707





GRIPTO	608 / 608 LP	609 / 609 LP	708	709
Attaching	flange	flange	flange	flange
Max outreach	7,8 m	8,5 m	7,8 m	8,5 m
Length of main boom	2,65 m	3,35 m	2,65 m	3,35 m
Length of extension boom	2x1,6 m	2x1,6 m	2x1,6 m	2x1,6 m
Height	1,9 m	1,9 m	1,9 m	1,9 m
Width	1,25 m	1,25 m	1,25 m	1,25 m
Lifting moment, brutto/netto (4 m)	62/40 kNm	62/37 kNm	75/51 kNm	75/47 kNm
Allowable load (without grapple and rotator)	1020 kg/4m	930 kg/4m	1290 kg/4m	1190 kg/4m
Turning angle of boom	380 degrees	380 degrees	380 degrees	380 degrees
Turning moment, brutto	20 kNm	20 kNm	20 kNm	20 kNm
Lubrication of turning device	oil	oil	oil	oil
Cylinders in turning device	4	4	4	4
Weight, basic loader	1150 kg	1180 kg	1170 kg	1200 kg
Working pressure (low pressure)	210 (185) bar	210 (185) bar	210 bar	210 bar
Recommended pump output	80-120 l/min	80-120 l/min	80-120 l/min	80-120 l/min

Recommended rotator: Indexator GV6

Recommended grapple: HSP 0,20

Size	0,20 m ²
Claw width	355 mm
Length – closed	780 mm
Height – closed	510 mm
Height – open	645 mm
Max opening	1400 mm
Minimum log diameter	95 mm
Max width	397 mm
Weight	130 kg

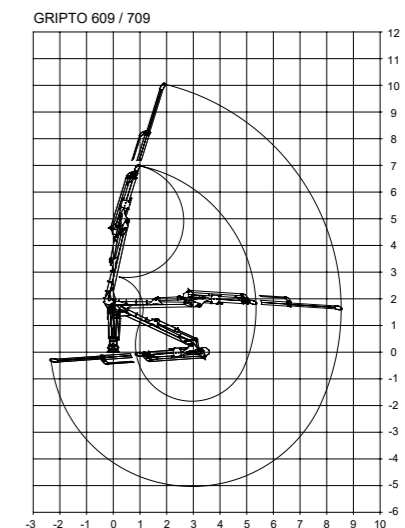
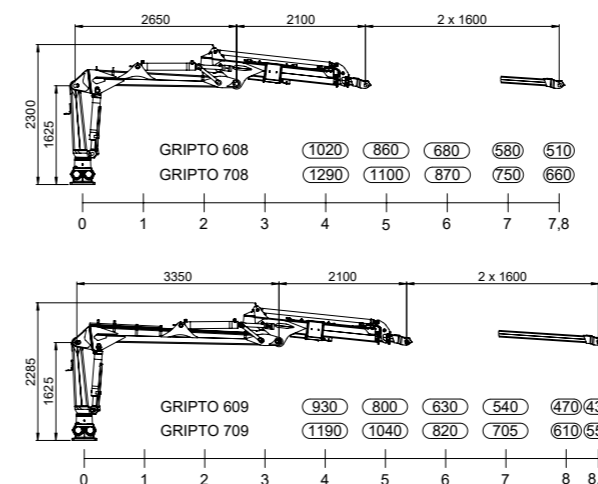
Gripto 608 | 609 | 708 | 709

» FOREST CRANE

GRIPTO 608 and 609 as well as 708 and 709 are easy to operate and a perfect supplement to our largest cranes Gripto 1009 and Gripto 1010. The Gripto 700 series is available with Smart Boom Control (crane tip control), which makes the control easier than ever. Gripto offers well-protected hoses inside the second boom all the way to the rotator. The hose dimension is also big enough to get maximal speed with minimum pressure losses.

» FEATURES

- Phenomenal precision and fast movements.
- Electronic end damping on the extensions (700 series), optional (600 series).
- Protected hoses inside the outer boom and out to the rotator.
- Smart Boom Control, optional (700 series).
- Lift and slewing dampers (700-series).





Gripto 1009 | 1010

» FOREST CRANE

The **GRIPTO 1010** is Kronos' largest and most powerful crane with a maximum reach of 10 meters. The **GRIPTO 1009** is the same crane but with a shorter design. Both models are ideal for professional use. With Smart Boom Control, the crane control becomes smooth as the operator can focus on controlling the crane tip instead of managing each part separately.

» FEATURES

- Hoses (3/4") on the main functions.
- End damping on extensions.
- Phenomenal precision and fast movements even with relatively low oil flows.
- LED work lighting.
- Protected hoses (1/2") in the second boom.
- Oil feed to the grab and extension is internally routed within the second boom.
- Crane tip control Smart Boom Control, optional.

GRIPTO

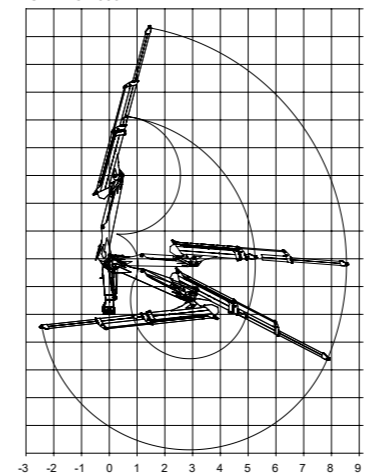
	1009	1010
Attaching	flange	flange
Max outreach	8,5 m	10 m
Length of main boom	3,28 m	3,68 m
Length of extension boom	2x1,65 m	2x2 m
Height	2,13 m	2,13 m
Width	1,46 m	1,46 m
Lifting moment, brutto/netto (4 m)	104/68 kNm	104/64 kNm
Allowable load (without grapple and rotator)	1740 kg/4m	1630 kg/4m
Turning angle of boom	380 degrees	380 degrees
Turning moment, brutto	30 kNm	30 kNm
Lubrication of turning device	oil	oil
Cylinders in turning device	4	4
Weight, basic loader	1550 kg	1600 kg
Working pressure	210 bar	210 bar
Recommended pump output	100-180 l/min	100-180 l/min

Recommended rotator: Indexator GV6

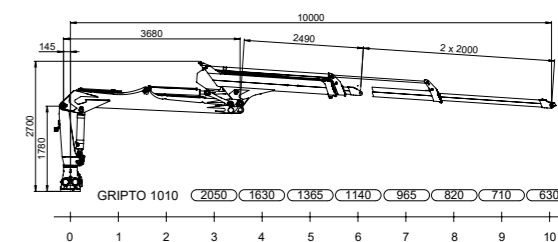
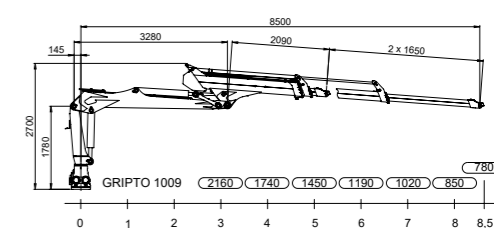
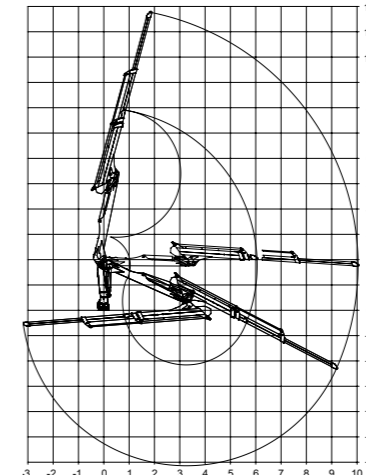
Recommended grapple: Huldins Supergrip 260

	1009	1010
Grapple size	0,26 m ²	0,26 m ²
Max opening of grapple	1525 mm	1525 mm
Minimum grapple diameter	90 mm	90 mm
Width of grapple	384/430 mm	384/430 mm
Weight, grapple + rotator	250 kg	250 kg

GRIPTO 1009



GRIPTO 1010





KRONOS 640 POLE LIFT

» POLE LIFT

KRONOS 640 pole lift is a small special crane that can be mounted for example on a Lännen backhoe loader.



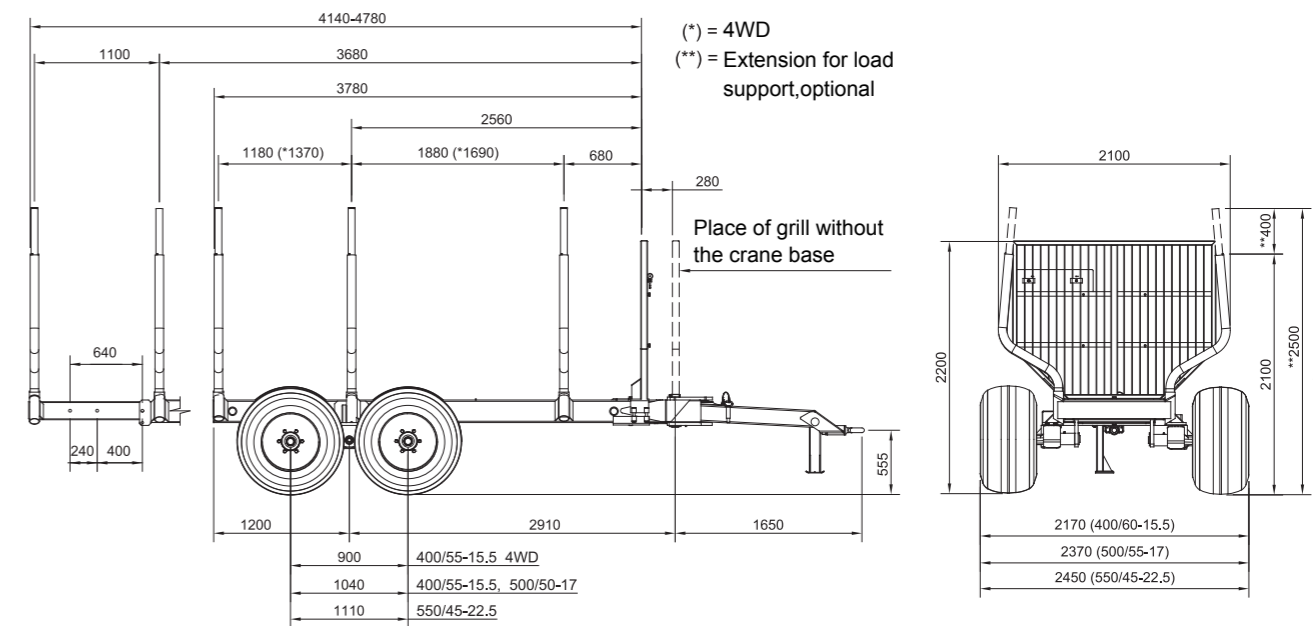


KRONOS

100

100 4WD

Weight	1490 kg	1850 kg
Carrying capacity	10 000 kg	10 000 kg
Cross-section area of load platform	2,1 m ²	2,1 m ²
Fixed Bolsters (standard)	6	6
Bogie movement range	20 degrees	20 degrees
Push force of trailer	-	16 kN
Ground clearance at bogie	~ 580 mm	~ 580 mm
Ground clearance at rear of frame	~ 580 mm	~ 580 mm



KRONOS 100

» FOREST TRAILER

KRONOS 100 and **100 4WD** are designed with double frame beams to make the structure rigid and to withstand large stresses even in demanding conditions. The 4WD model is hydraulically driven with a drive roller that automatically deploys between the tyres when the drive is switched on.

» FEATURES

- Long drawbar lead into the tractor for a maximum compliant trailer.
- Heavy duty posts, 12 mm wall thickness.
- 80 millimeter shafts on the hub.
- LED driving lights protected in off-road driving, optional.
- LED work lighting, optional.
- Reverse camera, optional.
- Frame extension, optional.

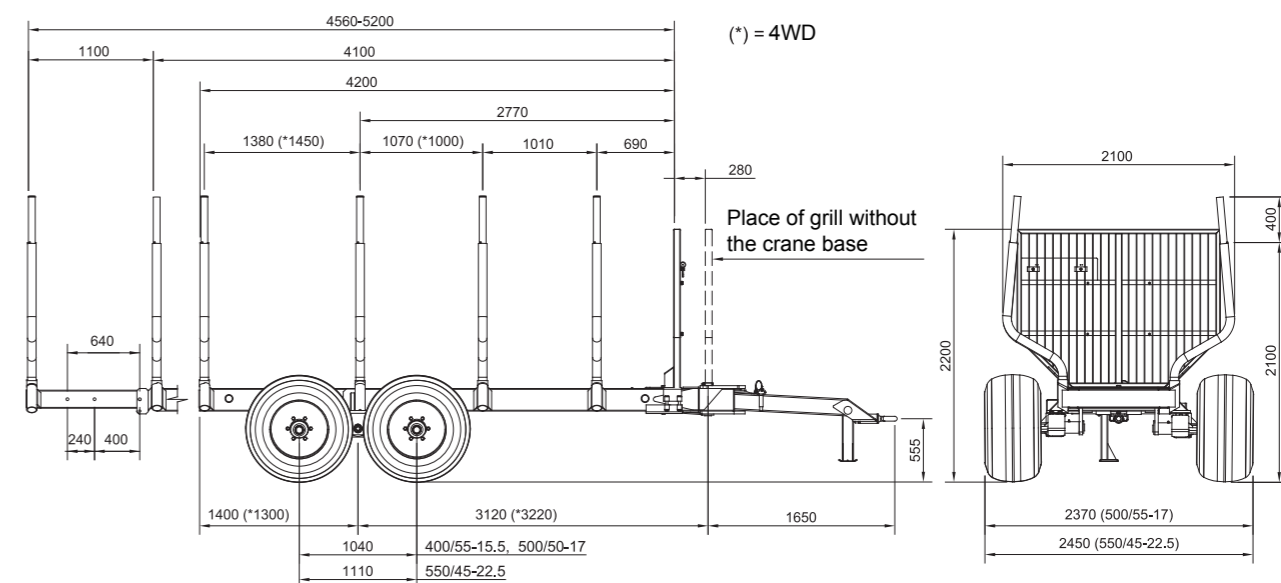


KRONOS

120

120 4WD

Weight	1690 kg	2050 kg
Carrying capacity	12 000 kg	12 000 kg
Cross-section area of load platform	2,9 m ²	2,9 m ²
Fixed bolsters (standard)	8	8
Bogie movement range	20 degrees	20 degrees
Push force of trailer	–	16 kN
Ground clearance at bogie	~ 610 mm	~ 610 mm
Ground clearance at rear of frame	~ 610 mm	~ 610 mm



KRONOS 120

» FOREST TRAILER

KRONOS 120 and **120 4WD** are designed with double frame beams to make the structure rigid and to withstand heavy stresses even in demanding conditions. The 4WD model is hydraulically driven with a drive roller that automatically deploys between the tyres when the drive is switched on.

» FEATURES

- Long drawbar lead into the tractor for a maximum compliant trailer.
- Heavy duty posts, 12 mm wall thickness.
- Powerful 80 millimeter shafts on the hub.
- LED driving lights protected in off-road driving, optional.
- LED work lighting, optional.
- Reverse camera, optional.
- Four banks with pole extensions.
- Smart Drive / Smart Drive+, optional.
- Hub drive, optional (wheel hub motor).
- Frame extension, optional.



KARGO 121

Load rating without options and crane	12 400 kg
Weight without crane	2 600–4 800 kg
Max vertical boom load	3 000 kg
Load area cross-section	3 m ²
Adjustable load bunks	3 pcs + 1 pcs, integrated with the moveable gate
Hydraulic drawbar	2 cylinders
Turning angle of drawbar	35 degrees
Bogie movement range	20 degrees
Tyres	550/45-22,5 (600/50-22,5 option)
Brakes	no brakes / hydraulic / pneumatic / 1 axle or 2 axles
Parking brake	option
Ground clearance	650 mm
Drum brakes	400x80 mm
Driven or nondriven	no drive / 4WD (Robson) / 2WDH (hydraulic) / 4WDH (hydraulic)
Push force 4WD / 2WDH / 4WDH	16 / 26 / 52 kN

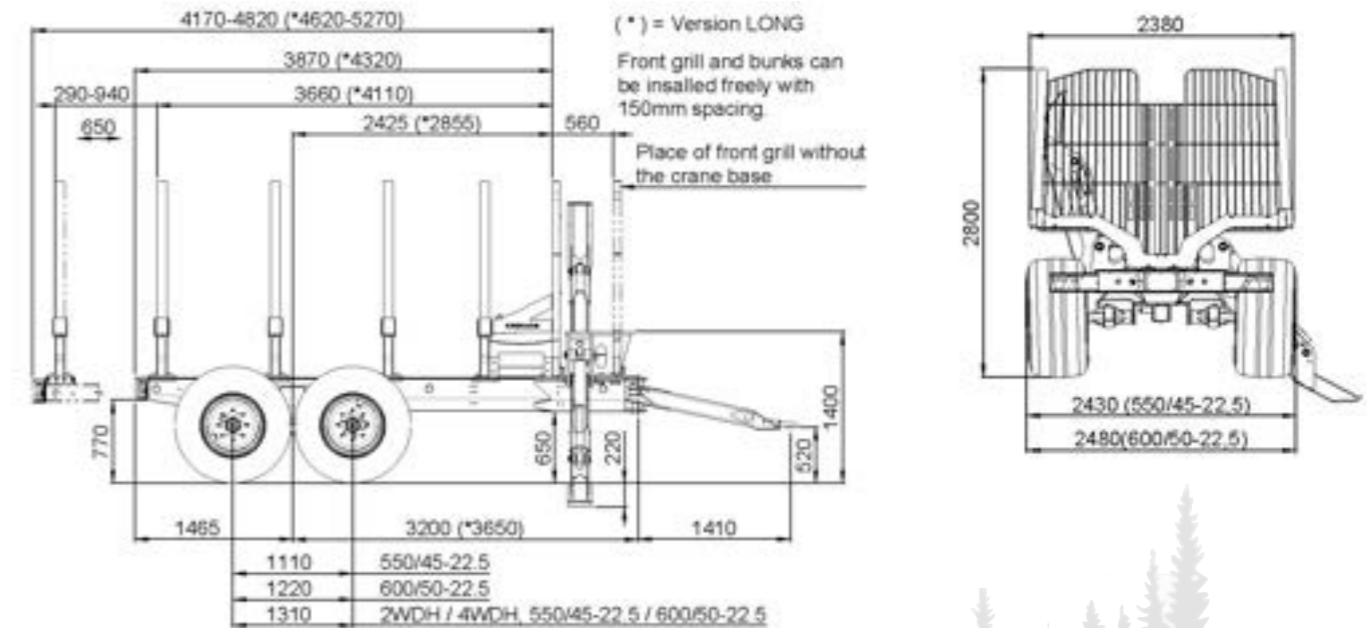
KARGO 121

» THE FLEXIBLE TRAILER

Kronos forest trailer **KARGO 121** is flexible and easy to upgrade. With modularization it can be equipped with needed features direct or be retrofitted. The frame is module based and built in one piece like a box which give strength, flexibility and good protection of inside components. This is a big trailer, with a capacity of a 3 m² cross section loading area. It is equipped with strong support legs with 100 mm cylinders. The hydraulic components are well protected inside a strong frame made of sheet metal, and there are no structure-weakening holes in the frame between the front end and the bogie.

» MADE FOR HEAVY USE

Kargo 121 works like a forwarder, with freely movable load supports, and can be equipped with up to 600/50-22,5 tires. The front grill can easily be bolted at the front end of the frame when there is no crane on the trailer. The trailer can be driven with 2WD or 4WD. The ground clearance is 650 mm, and the bottom surface of the frame is flat.



KARGO 121

Optional equipment

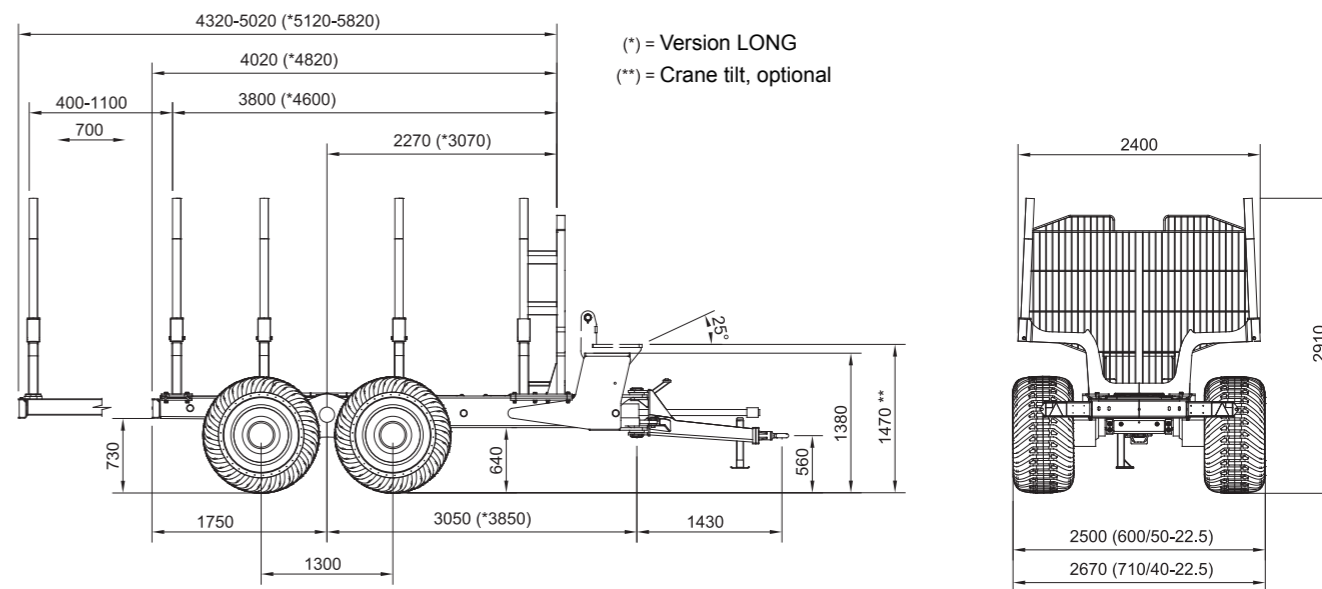
1. Hydraulic front grill
2. Crane base and support legs
3. Smart Stabilizer Control (SSC)
4. Frame extension
5. Hydraulic hub drive (2WDH / 4WDH) / wheel drive (Robson)
6. Smart Drive
7. Hydraulic pump equipment
8. Toolbox
9. Rear camera
10. Working lights
11. Foldable rear lights
12. Crane parking support
13. High-rise sides
14. Hitches
Pick-up Hitch (standard) / K80 ball / Bernhofer DIN 11026
15. Tyres
Alliance 328 550/45-22,5 (standard)
Alliance 331 550/45-22,5
Alliance 328 600/50-22,5
Nokian Forest King TRS 600/50-22,5





KRONOS 140

Weight	5400 kg
Carrying capacity	12 000 kg
Total weight permitted on bogie with max speed 30 km/h	14 000 kg
Cross-section area of load platform	3.2 m ²
Adjustable load bunks	3 pcs + 1 pcs integrated with the moveable gate
Bogie movement range	20 degrees
Push force of trailer	75 kN
Ground clearance at bogie	~ 550 mm
Ground clearance at rear of frame	~ 700 mm



KRONOS 140

» FOREST TRAILER

The **KRONOS 140 4WDM** is a trailer for those who seek maximum performance in rough terrain. A forwarder with the tractor's traffic advantages, which have been designed to withstand uneven loads and steep terrain. The trailer has a propulsion system with a bogie unit form NAF which is well-regarded among forwarders and harvesters. It is equipped with differential lock and wet disc brakes. The power transmission has a slip coupling to protect against temporary overload. The standard equipment includes a decoupling with built-in monitoring protection that alerts if the speed exceeds

10 km/h with the drive switched on. The wheels can be fitted with chains or tracks.

» FEATURES

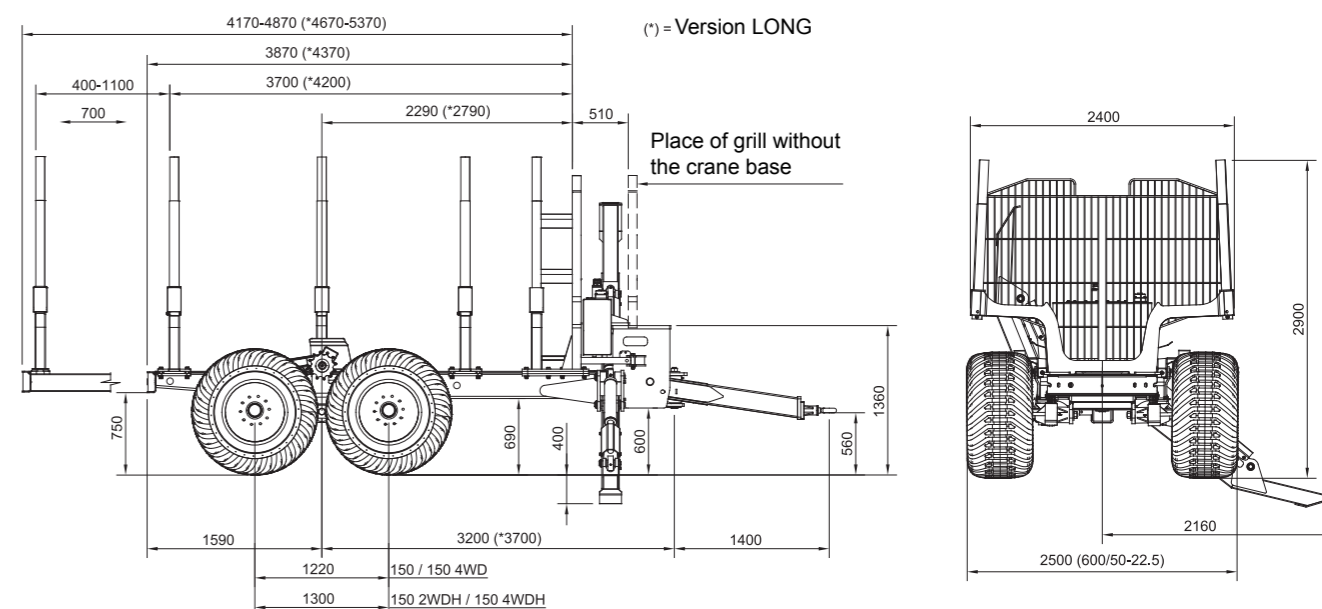
- High push force.
- Differential lock.
- High ground clearance.
- Heavy frame for large cranes and large loads.
- Powerful load carriers, well known in the forwarder industry.
- Y-drawbar or normal boom with frame guide.
- Crane tilt with +5 to -25° angle, optional.
- Centralized lubrication system.



» Steering unit for the drive.



KRONOS	150	150 4WD	150 2WDH/4WDH
Weight	4100–4500 kg	4100–4900 kg	4100–4900 kg
Carrying capacity	15 000 kg	15 000 kg	15 000 kg
Cross-section area of load platform	3,2 m ²	3,2 m ²	3,2 m ²
Adjustable load bunks			
(integrated with the moveable gate)	3 pcs (+ 1 pcs)	3 pcs (+ 1 pcs)	3 pcs (+ 1 pcs)
Bogie movement range	20 degrees	20 degrees	20 degrees
Push force of trailer	–	16 kN	26/52 kN
Ground clearance at bogie	~ 640 mm	~ 640 mm	~ 640 mm
Ground clearance at rear of frame	~ 700 mm	~ 700 mm	~ 700 mm



KRONOS 150

»» FOREST TRAILER

The **KRONOS 150** and **150 4WD** are trailers with a large load capacity. They are suitable for those who need to be able to mount a large loader but at the same time want a trailer that is easy to pull on the road. The trailers are also available with hub motors and a maximum push force of 51 kN

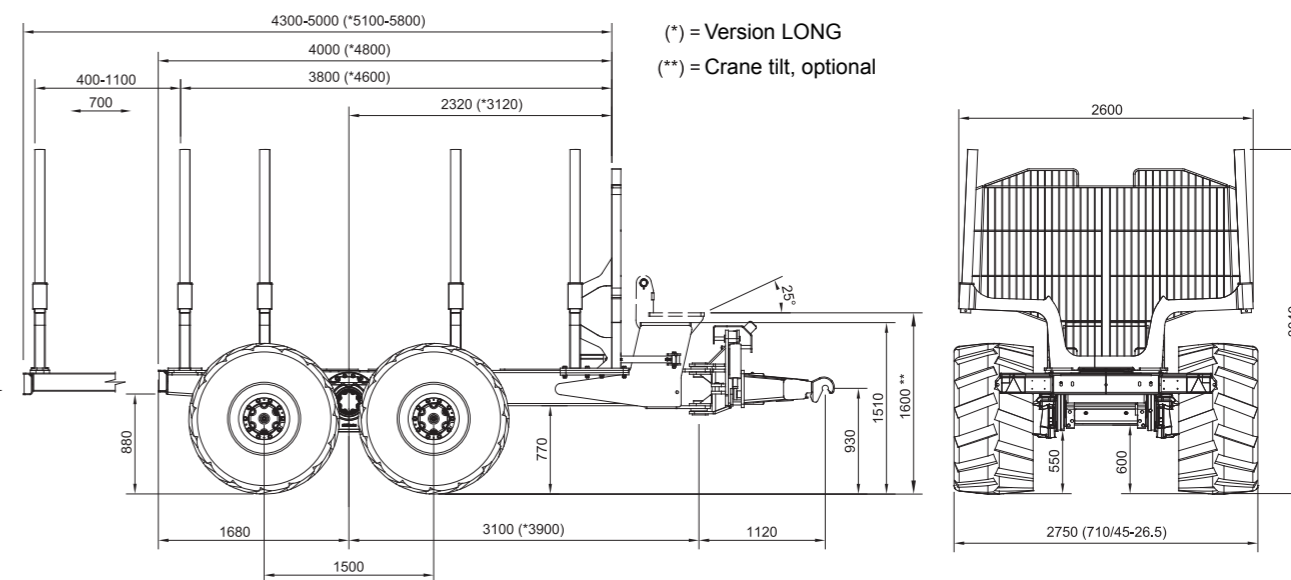
»» FEATURES

- Large 600/50–22.5 tyres.
- Frame extension, optional.
- Frame built as a box.
- Durable load carriers, well known in the forwarder industry.
- Integrated LS-pump, optional.
- Y-drawbar with steering cylinders, optional.
- 100 millimeter pins in bogie and drawbar.
- Smart Drive / Smart Drive+, optional.



KRONOS 160 4WDM

Weight	6600 kg
Carrying capacity	13 000 kg
Total weight permitted on bogie with max speed 30 km/h	16 000 kg
Cross-section area of load platform	3,45 m ²
Adjustable load bunks	3 pcs + 1 pcs integrated with the moveable gate
Bogie movement range	20 degrees
Push force of trailer	90 kN
Ground clearance at bogie	~ 660 mm
Ground clearance at rear of frame	~ 840 mm



KRONOS 160 4WDM

» FOREST TRAILER

KRONOS 160 4WDM is a trailer for those who seek maximum performance in the terrain. It is a forwarder with the strengths of a tractor designed to withstand uneven loads and steep terrain. The trailer has a propulsion system with a bogie unit from NAF, well-regarded in the industry of forwarders and harvesters. It comes equipped with differential lock and wet disc brakes. The power transmission has a slip coupling to protect against temporary overload. The standard equipment includes a decoupling with built-in monitoring protection which alerts if the speed exceeds 10 km/h with the drive switched on. The trailers are compatible with chains or tracks.

» FEATURES

- High driving force.
- Differential lock.
- High ground clearance.
- Heavy frame for large cranes and heavy loads.
- Powerful load carriers, well known in the forwarder industry.
- Y-drawbar with steering cylinders, optional.
- Functions overseen by a controller.
- Up to 800 millimeter wide tyres.
- Hydraulic frame extension.
- Crane tilt with +5 to -25° angle, optional.
- Centralized lubrication system.



» Steering unit for the drive.



**SMART
BOOM
CONTROL !**

XCRANE & LTRANE

» SMART CONTROL

XCRANE and LTRANE controls your crane and trailer functions regardless of the hydraulic solutions or crane type. These systems are a perfect solution for new cranes or as a retrofit for existing cranes. They make controlling your crane extremely effective, precise and are also easy to learn. With xCrane together with Parker L90 valves the crane control is as close to perfection you can come. Our cranes can also be radio controlled with Scanreco – separately or combined with xCrane (not with LtCrane). When combined with xCrane, all the crane adjustments are being done on the xCrane-screen.

LtCrane

» USER BENEFITS

- Cost effective crane control system.
- Parameters like minimum and maximum speed, acceleration and deceleration ramps, speed, balance, joystick calibration and dead band are factory adjusted.
- Includes a potentiometer on the control panel, where the general crane speed can be adjusted by the operator.
- Includes Caldaro mini levers and lever brackets.
- Eight proportional outputs.
- The support leg control is activated by pressing a button on the left joystick at the same time as the lift and the second boom function is activated.

NOTE: Our features Smart Boom Control, Smart Drive and SSC are only included in xCrane.

» HYDAC LX3

- Eight proportional LS valves.
- All eight sections are pressure compensated = good crane handling.
- Can be used with both LS- and constant flow pump.
- P->T max 150 l/min.
- Crane optimized spools gives you a high precision.
- Lift single acting, second boom and extension regenerative = fast crane operation even with low flow.
- Suitable up to Gripto 700-series.



xCrane

» USER BENEFITS

- Performance and efficiency – The xCrane control system responds quickly and accurately.
- Operation – xCrane's logical user interface is easy to learn and operate.
- System updates happen smoothly with a USB memory stick.
- Field tested in tough conditions.
- One of the most advantageous solutions on the market.
- Customizable as needed.

» SYSTEM SPECIFICATIONS

- 3.2" color screen.
- Adjustment of speed, ramps and progression for each movement.
- Joystick calibration, filtering and elimination of interference.
- Hour meter.
- Interactive floating mode.
- Tractor CANBus Integration.
- Radio control available.

» INTEGRATION WITH THE TRACTOR'S CONTROL SYSTEM FOR EXAMPLE TRAILER APPLICATIONS

- Communication via CAN J1939.
- Trailer operation is automatically activated on and off, and adjusted with the tractor's driving direction.
- Trailer operation is automatically deactivated when maximum allowed speed is reached.
- The hub drive of the trailer is synchronized with the tractor speed via Smart Drive+.
- Control the tractor steering from the crane's joystick or extra thumb rocker.
- Automatic front axle lock.



xCrane PRO

**SMART
BOOM
CONTROL !**

» SMART BOOM CONTROL TIP CONTROL

xCRANE PRO brings crane operations to a completely new level with its state-of-the-art tip control: Operators can now control the tip of the boom instead of controlling each cylinder separately.

» SYSTEM SPECIFICATIONS

- End cushions for all boom movements increase the well-being at work, and the lifetime of the crane.
- Extremely effective, fast and precise.
- Easy to learn.
- Enables automatic movements.
- Enables collision prevention.
- Provides all the xCrane benefits.



» Scanreco radio control unit, option for xCrane and xCrane Pro.



SMART DRIVE | SMART DRIVE+ SMART DRIVE

» CONTROL SYSTEM

SMART DRIVE automates the drive on the trailer, so you don't have to think about activating the gear or in which direction. **SMART DRIVE+** is designed for trailers with hub motors. In addition to automated operation, synchronized operation is also available. The flow to the hub motors is controlled based on speed information from the tractor's CANbus, so the trailer always drives 5% faster than the tractor. When the amount of oil from the pump is no longer sufficient, operation automatically switches off to prevent cavitation in the motors. Additionally, a curvature function lowers the drive speed by 10%, and a boost

function increases the drive speed by 10% in challenging situations. A 3-position switch next to the joystick easily activates these functions. The speed and direction information that the control system needs comes from Valtra's CANbus and does not entail any additional costs for Valtra owners. We offer the advantage of the mechanical drive with synchronization, and the benefits of the hydraulic drive such that no ground-dependent power take-off is required and the trailer creates little to no resistance during road driving. **Smart Drive and Smart Drive+ are part of the xCrane crane control.**



SMART STABILIZER CONTROL (SSC)

» INTELLIGENT CONTROL SYSTEM

SMART STABILIZER CONTROL (SSC) is a semi-automatic control system for the support legs on your trailer. By clicking three times on the joystick the system will automatically move the support legs down and level the trailer. By clicking two times, the support legs will move to an upper position for transportation.



KRONOS HIGH-RISE SIDES

» HIGH-RISE SIDES

Installing high sides on your forest trailer increases its utility. The high sides facilitate the transport of sticks, branches and other light materials. The sides are available for all Kronos forest trailers.





CUSTOMIZE YOUR KRONOS

» KRONOS OPTIONAL EQUIPMENT

We have a wide range of accessories to customize your equipment according to your individual needs and preferences. Here you will find all our add-ons for timber trailers, loaders, and tractors. If necessary, we can also develop customized solutions. Contact us for more information.

» EQUIPMENT FOR TRAILERS

- Traffic lights
- Parking lights
- Working lights
- Warning lights
- Toolbox
- Rear camera
- Extension boom
- Pneumatic or hydraulic brakes
- Hydraulic pump equipment, gear pump / variable piston pump
- Oil cooler

» EQUIPMENT FOR CRANES

- Hydraulic winch
- Working lights
- Camera
- Centralized lubrication

» EQUIPMENT FOR THE TRACTOR CABIN

- Joystick holder that can be integrated with Valtras standard or functional armrest
- Smart Seat Turn

» GRAPPLES

- Log grapples: 0,17 m² | 0,20 m² | 0,26 m²
- Energy wood grapples: 0,16 m² | 0,20 m² | 0,26 m²



» CRANE BASE A01

Crane base A01 incl. support legs, for tractor 3-point and trailer.

» CRANE BASE W04

Crane base W04 incl. support legs.

» TOOLBOX

for trailers.

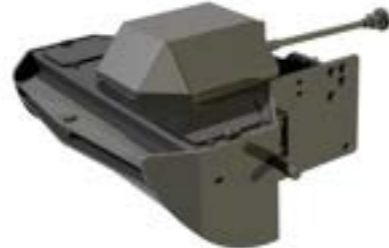
» SMART SEAT TURN (STT)

This seat turning device is perfect for Valtra N- and T-series, where the foot pedal will allow you turn and twist better than ever before.

OPTIONAL EQUIPMENT



VALTRA N1 AND N2
110 l hydraulic unit



VALTRA N1 AND N2
160 l hydraulic unit



VALTRA T4 AND T5
150 l hydraulic unit



VALTRA N3-N5
150 l hydraulic unit



VALTRA M- AND T0-T3-SERIES
150 l hydraulic unit



UNIVERSAL PUMP UNIT
Universal pump unit for tractor 3-point.

	N1 AND N2-SERIES*	N1 AND N2-SERIES	M- AND T0-T3-SERIES*
Volume of the tank	160 l	110 l	150 l
Variable displacement (LS) pump	71/110 cm ³	71 cm ³	71/110 cm ³
Pump output at engine speed 1000 rpm	71/110 l/min	71 l/min	110 l/min
Pump output at engine speed 2200 rpm	156/242 l/min	156 l/min	156/242 l/min
Weight of tank including oil	600 kg	390 kg	480 kg

	T4 AND T5-SERIES	05- AND 6000-SERIES*	8000-SERIES	N3-N5-SERIES
Volume of the tank	150 l	90 l	150 l	150 l
Variable displacement (LS) pump	71/110 cm ³	71 cm ³	71 cm ³	71/110 cm ³
Pump output at engine speed 1000 rpm	71/110 l/min	71 l/min	71 l/min	71/110 l/min
Pump output at engine speed 2200 rpm	156/242 l/min	156 l/min	156 l/min	156/242 l/min
Weight of tank including oil	450 kg	370 kg	400 kg	430 kg

UNIVERSAL PUMP UNIT

Volume of the tank	100/150 l
Variable displacement (LS) pump	71/110 cm ³
Pump output at engine speed 1000 rpm	145-220 l/min
Weight of tank including oil	420/550 kg

* not compatible with front loader



COOLER
for hydraulic units for Valtra N3-N5-, T4- and T5-series.



PREDATOR 1700 M

Working width	1700 mm
Weight	1000 kg
Length	2840 mm
Height in transportation mode	2870 mm
Max side movement	1500 mm
Horizontal reach	4550 mm
PTO	540–650 rpm
Tilt	120 degrees
Steering	2 hydraulic cylinders

» Shafts instead of belts translates in to lower maintenance costs, and reduced power loss from tractor to the mulcher.

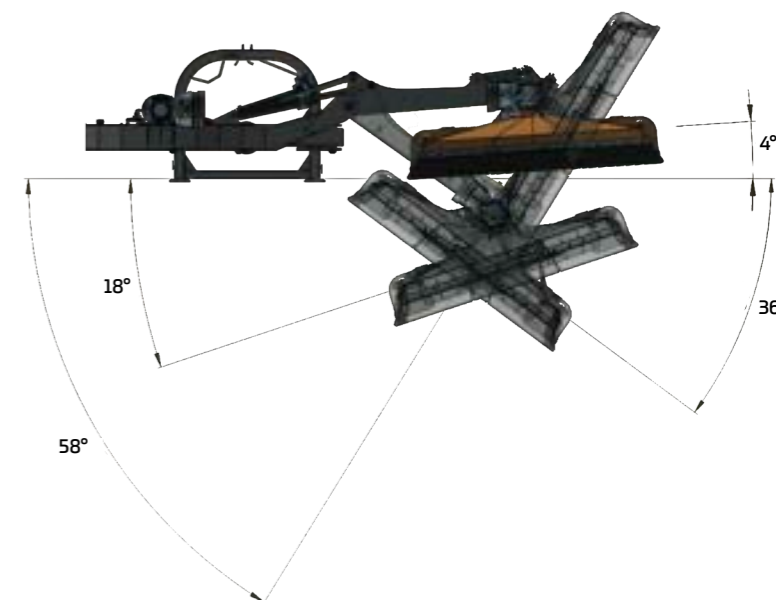
» The improved rounded design and streamlined shape helps to improve mulching efficiency



» The front hood can be opened manually, or optional by hydraulic, to allow for larger volumes to enter.

SMART SWITCH

» Easy to replace the chain.



PREDATOR 1700 M

» CHAIN MULCHER

Kronos **PREDATOR 1700 M** chainmulcher is an effective tool with superior capacity and range, both for keeping field edges clean as well as for contractors. The chains on the Predator 1700 M work well in challenging and rocky conditions. The cutting head is shaped like a pyramid, which provides rigidity while dirt, snow and slush slip off. The second drive shaft has dual wide-angle joints that allow large sectors of movement on the cutting head, allowing clearance on the other side of the ditch. The front edge is made of a curved tube.

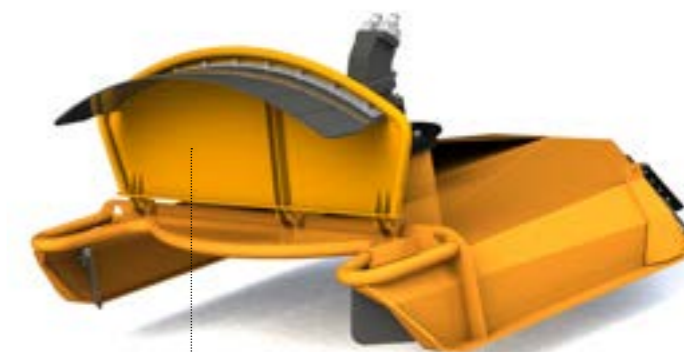
» FEATURES

- Hydraulic tilt of cutting head, optional.
- Optional hydraulic front door.
- Conversion kit for reverse drive, optional.
- Version for front mountin, optional.
- Selector valve for doubling hydraulic functions, optional.



PREDATOR 1700 H

Working width	1700 mm
Oil required	100–150 l/min
Recommended Pressure	200–350 bar
Weight	400 kg
Length	2200 mm
Width	2000 mm
Height	808 mm
Wear surfaces	HARDOX
Installation	on cranes and excavators
Standard equipment	foldable front splash guard
Optional equipment	hydraulic front splash guard



» The front hood can be opened manually, or optional by hydraulic, to allow for larger volumes to enter.

» Inside the chain house there are six tracks to switch between, and you can use both 10 and 13 millimeter chains.

PREDATOR 1700 H

» CHAIN MULCHER

Kronos **PREDATOR 1700 H** chain mulcher is an effective tool with superior capacity and range, both for keeping field edges clean as well as for contractors. The Predator is available with an optional tilt and turn unit on the cutting head, which makes it easy to cut on the far side of a ditch. It can also be equipped with a hydraulic front splash guard with which you can easily clear coarser bushes. The Predator 1700 H can be mounted on an excavator or a timber crane. With it, you can easily reach the railings, plow sticks, and the edge of road markers.

» FEATURES

- The cutting head is shaped like a pyramid, which offers rigid support while dirt, snow and slush naturally slip off.
- The front edge of the clearing head is rounded from above, which means the chain extends in front of the head with the front door in the folded-up position.
- The entire front edge is made of a curved tube, which makes plants slip easily under the cutter.
- Optional hydraulic front door.
- Hydraulic tilt of cutting head, optional.
- Tilt and turn unit for cranes, optional.

TILT AND TURN UNIT

Weight	130 kg
Tilt angle	80 degrees
Turning angle	360 degrees



» Tilt and turn unit

HARROWS

TECHNICAL INFORMATION



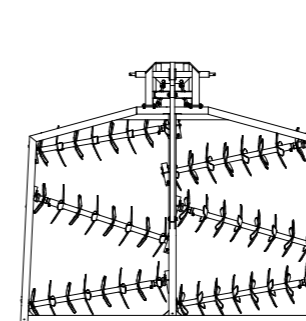
KRONOS	3150	4150 H	4200	4900 H
Working width	315 cm	415 cm	420 cm	490 cm
Transport width	340 cm	240 cm	230 cm	240 cm
Transport height	–	155 cm	190 cm	210 cm
Transport length	290 cm	530 cm	330 cm	530 cm
Transport wheels	–	11,5/80–15/12 pr	–	11,5/80–15/12 pr
Number of shafts	6	12	9	12
Number of ball bearings	24	48	36	48
Number of blades	96	160	126	192
Weight	600 kg	1900	1200 kg	2065 kg
Power requirement	60/80 kW/hp	97/135 kW/hp	85/115 kW/hp	106/145 kW/hp
Optional equipment	rib roller	rib roller, side support wheels	–	rib roller, side support wheels

KRONOS HARROWS

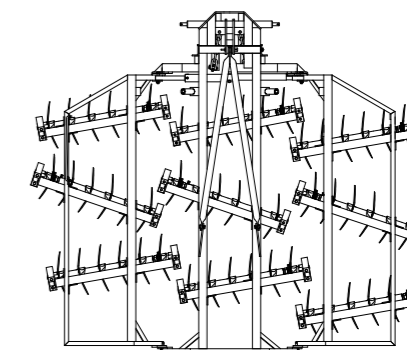
» HARROWS

The Kronos rotary harrow is a multi-purpose tool in agriculture. It is available in four different sizes with working widths from 3.15 to 4.9 meters. Its open frame construction makes the harrow fast and efficient while the resilient shaft suspension suppresses shocks and vibrations. The harrows are available in both hydraulic and towed models. The excellent mixing ability of Kronos throughout the whole stratum is

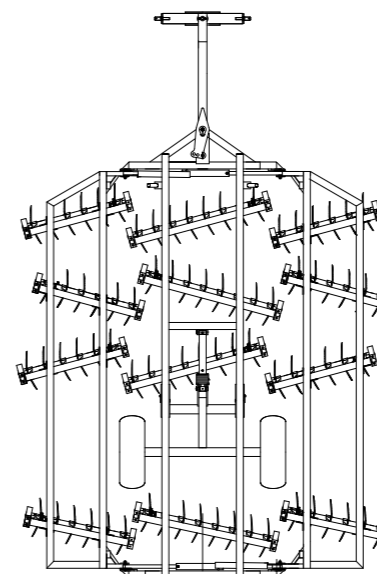
based on its blade movement. Kronos covers over straw, stubble and other plants evenly so that decomposition can start immediately. Kronos breaks even hard clods and tears the trash into pieces. It breaks and cuts the roots of weed plants efficiently, thus preventing nutrients from gathering around the weed roots. Kronos destroys weeds on the spot.



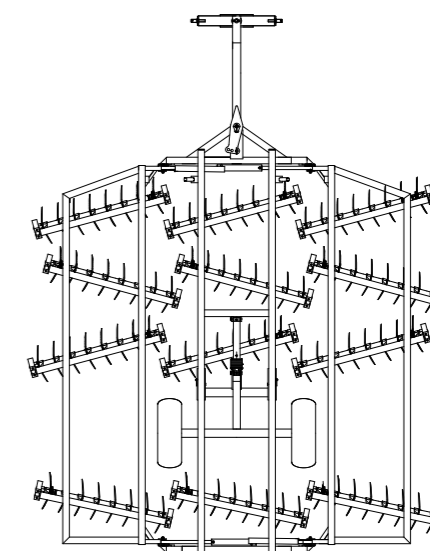
KRONOS 3150



KRONOS 4200



KRONOS 4150 H



KRONOS 4900 H



KRONOS

Quality since 1914

KRONOS MACHINERY OY AB

Wikarsvägen 12, 68500 Kronoby, FINLAND

mail@kronos.fi | www.kronos.fi

